

33720-HD

Strut Gimble Bearing

Linking rod (Strut) end gimble bearing used in various in 3D printers, LASER cutters and other machine tools.

Body: Plated Steel

Bore: 4mm

Rod Thread: M4x0.7mm

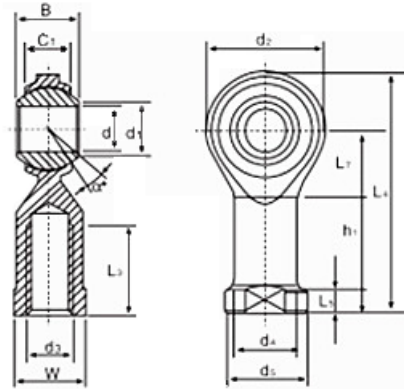
Ball Thickness: 7mm

Base Max Dia. 9.5mm

STRUT ROD END BEARING

MAINTENANCE REQUIRED

Periodic Cleaning & Lubrication Required



Part Number	mm Dimensions														KN Load ratings		kg Weight
	d	d ₃ 6H	B	C ₁	W	h ₁	d ₂	L ₄	L ₅	d ₄	d ₅	d _k	L ₃ min	α ₉₀	dyn.c	stat.c ₁	
NHS/S14	4	M4 x 0.7	7	5.25	8	24	14	31	4	8	9.5	9.49	12	12	2.5	2.9	0.012

Information obtained from or supplied by Mpja.com or Marlin P. Jones and Associates inc. is supplied as a service to our customers and accuracy is not guaranteed nor is it definitive of any particular part or manufacturer. Use of information and suitability for any application is at users own discretion and user assumes all risk.



MARLIN P. JONES & ASSOC., INC.

P.O. Box 530400 Lake Park, FL 33403

800-652-6733 FAX 561-844-8764

WWW.MPJA.COM